

Partner Math!

Name: College Alg partner Math

Review
2-4-2-7

1st TASK: NUMBER

Write an equation in Slope intercept form for a line perpendicular to $-x+5y=10$ and through the point $(6, -2)$

$M = -5$

$-x+5y=10$
 $+x \quad +x$
 $5y = x+10$
 $y = \frac{1}{5}x+2$

$y = -5(x-6)-2$
 $y = -5x+30-2$
 $y = -5x+28$

2nd TASK: NUMBER

Graph Both lines in task #1

3rd TASK: NUMBER

Explain using Math vocabulary. Compare the graph of $y = -2\sqrt{x}-3$ to the function $y = \sqrt{x}$.

The graph of $y = -2\sqrt{x}-3$ is going to reflect over x-axis Vertical Stretch moves right 3.

4th TASK: NUMBER

Graph $f(x) = -2\sqrt{x}-3$

$y = -2\sqrt{x}$

x	y
0	0
1	-2
4	-4
9	-6

5th TASK: NUMBER

Explain using Math Vocabulary. Compare the graph of $y = \frac{1}{2}(x+3)^2-4$ to the function $y = x^2$

The graph $y = \frac{1}{2}(x+3)^2-4$ is a Vertical Shrink moved left 3 and down 4

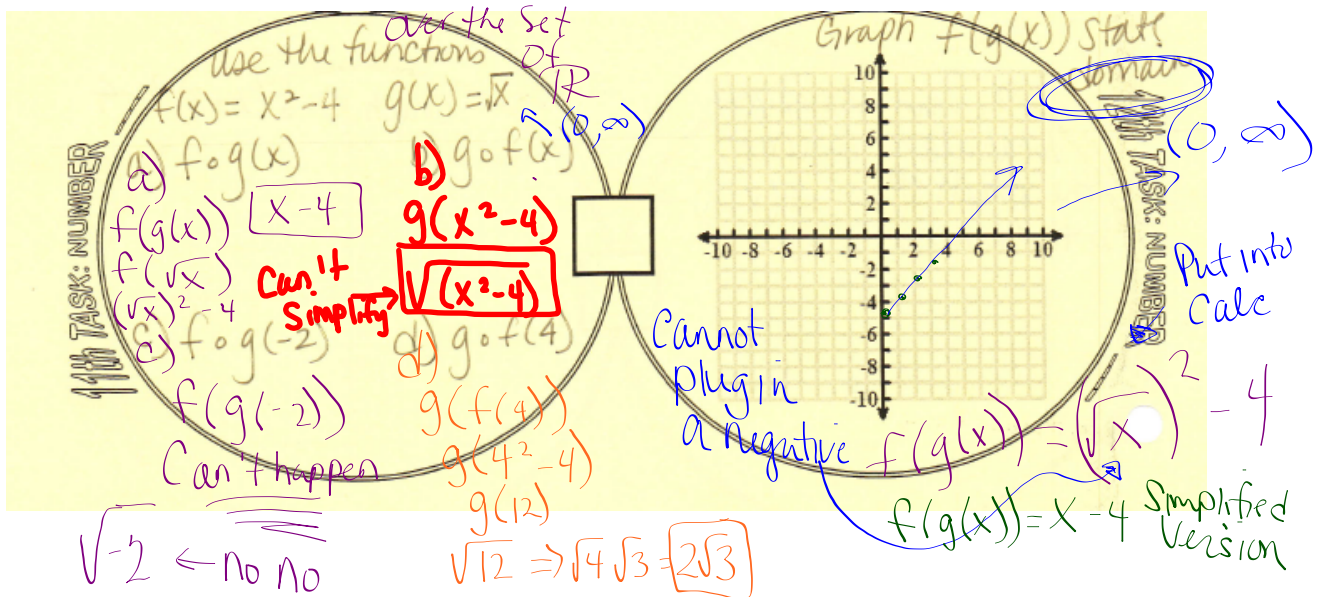
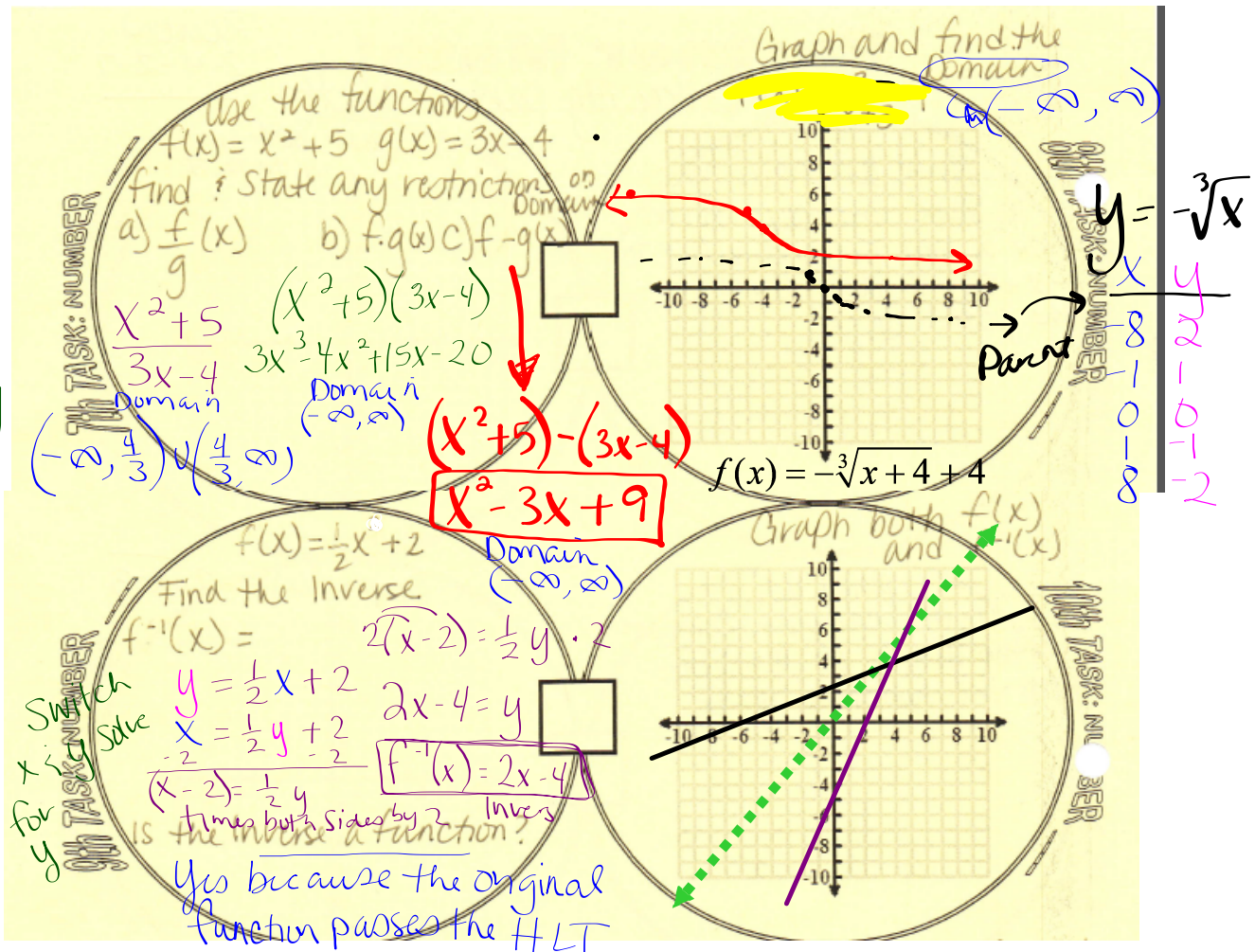
6th TASK: NUMBER

Graph $y = \frac{1}{2}(x+3)^2-4$

$y = \frac{1}{2}x^2$

graph Parent

x	y
-4	8
-2	2
0	0
2	2
4	8



Attachments

Chapter 1 MULT choice.pdf

Cummulative review Chapters p-2.pdf

Chapter 2 Review book.pdf

Relay Math College Alg 2-1 2-3.pdf

Relay_collegeAlg_2_12_3Rev.pdf

College Alg Partner math 2-4-2-7.pdf

College Alg StationCh2 Review.pdf

MATHO Answers 2-1 2-4028.pdf

Station2_1 2_4 CollegeAlg026.pdf

MATHO 2-1 2-4 College Alg.doc

college Alg Ch 2 TickettimeReview.notebook

Partner math 2-4 2-7 college Alg.pdf

Tickettimecollegealg ch2 Review.pdf